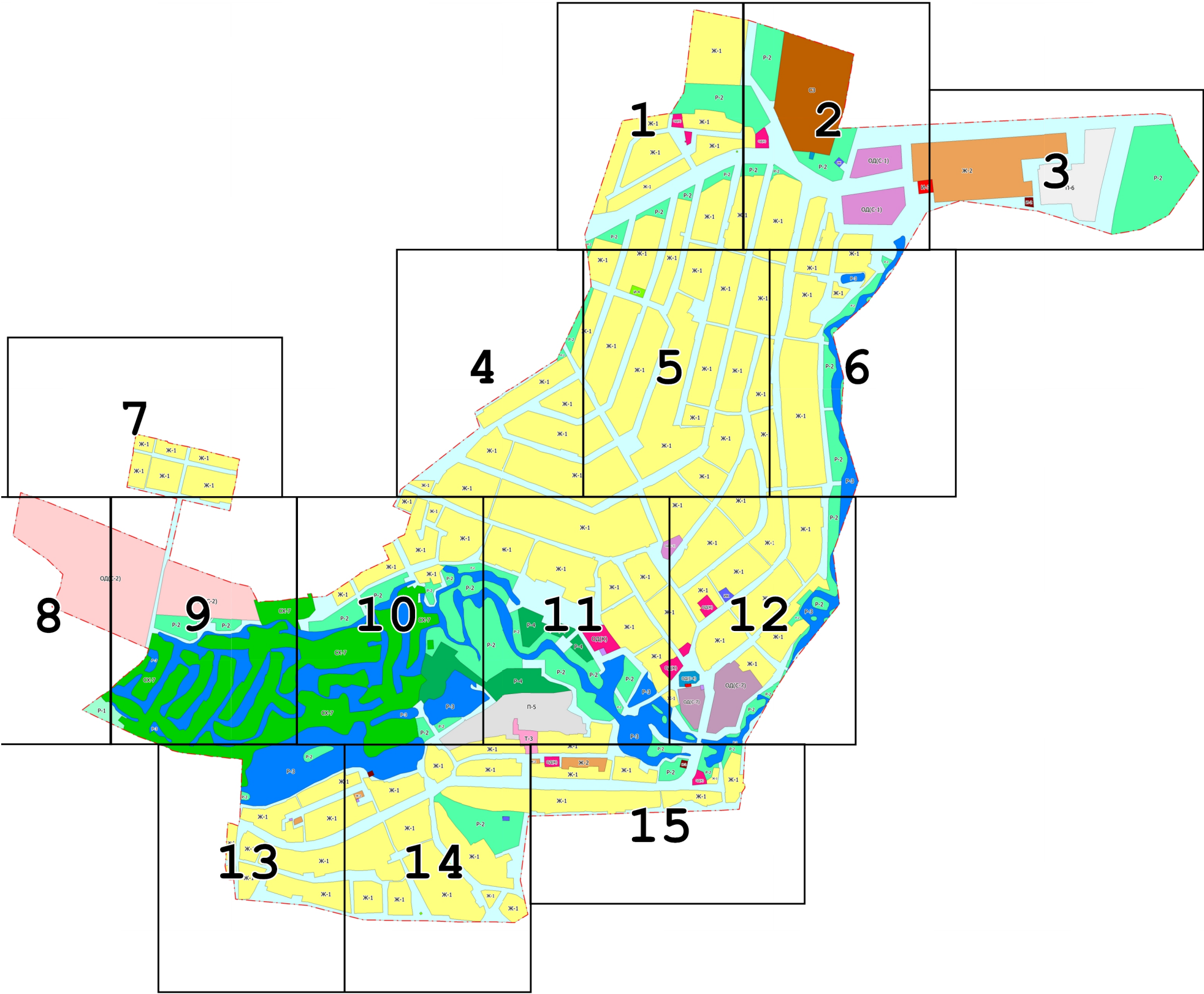
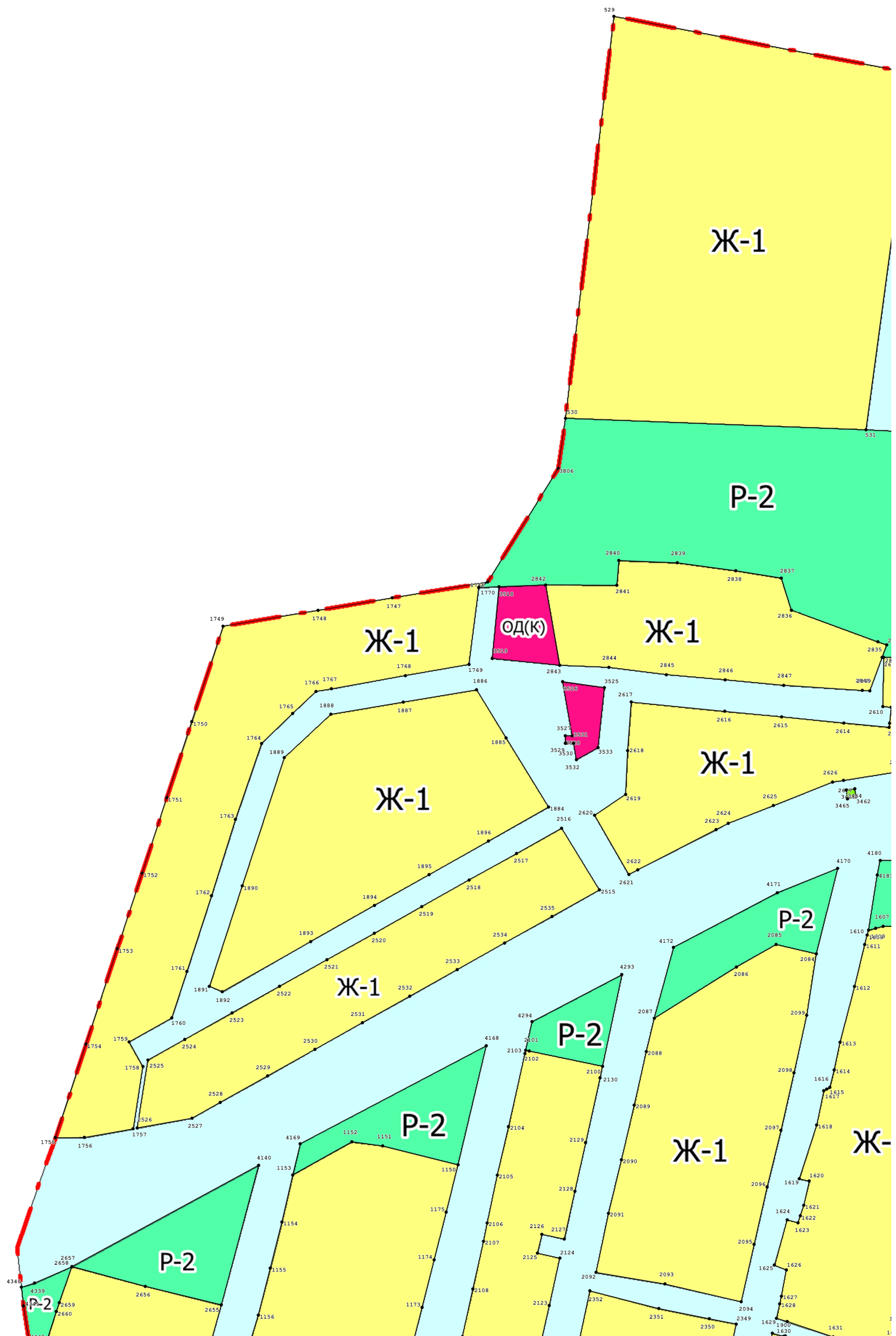


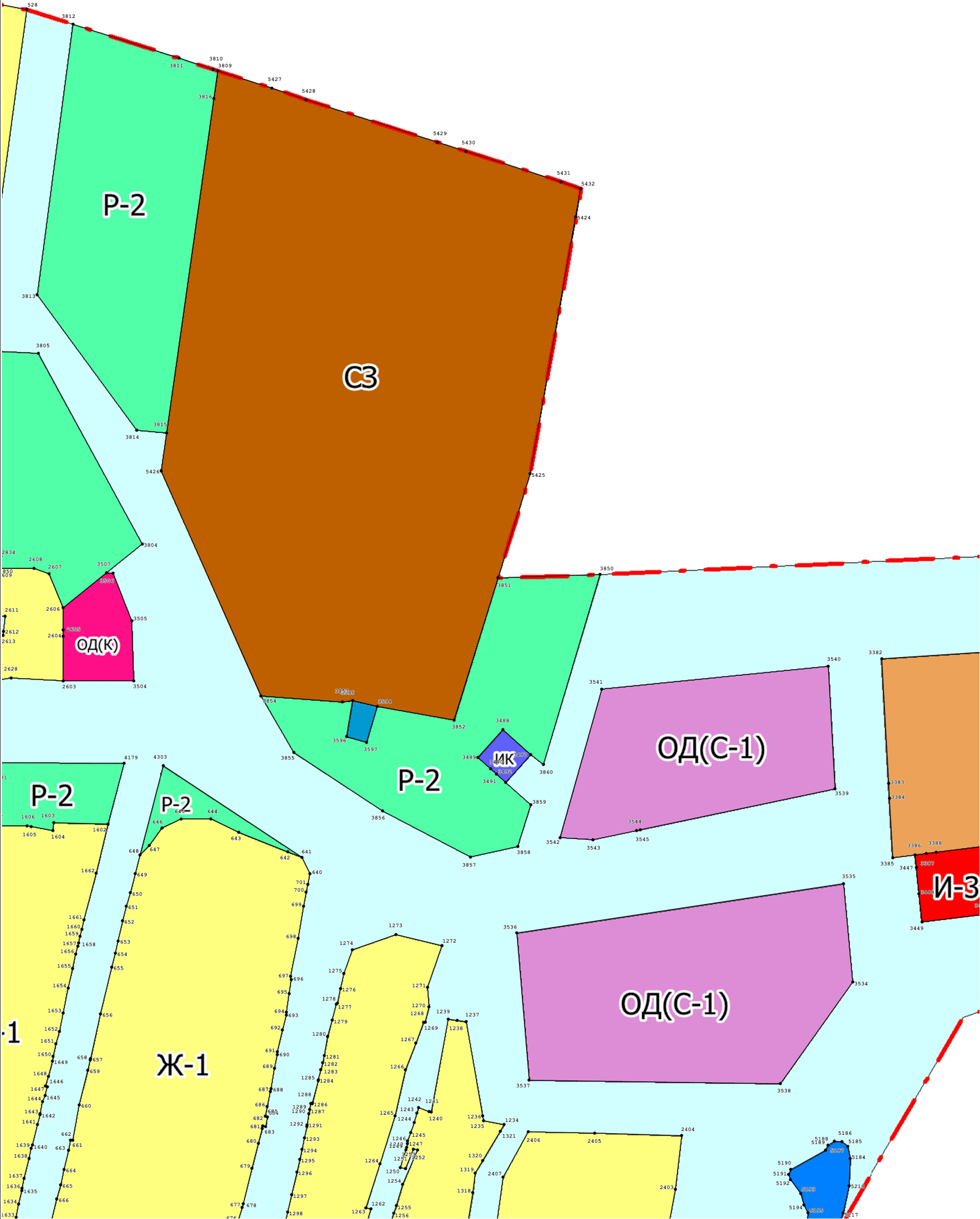
Графическое описание местоположения границ территориальных зон

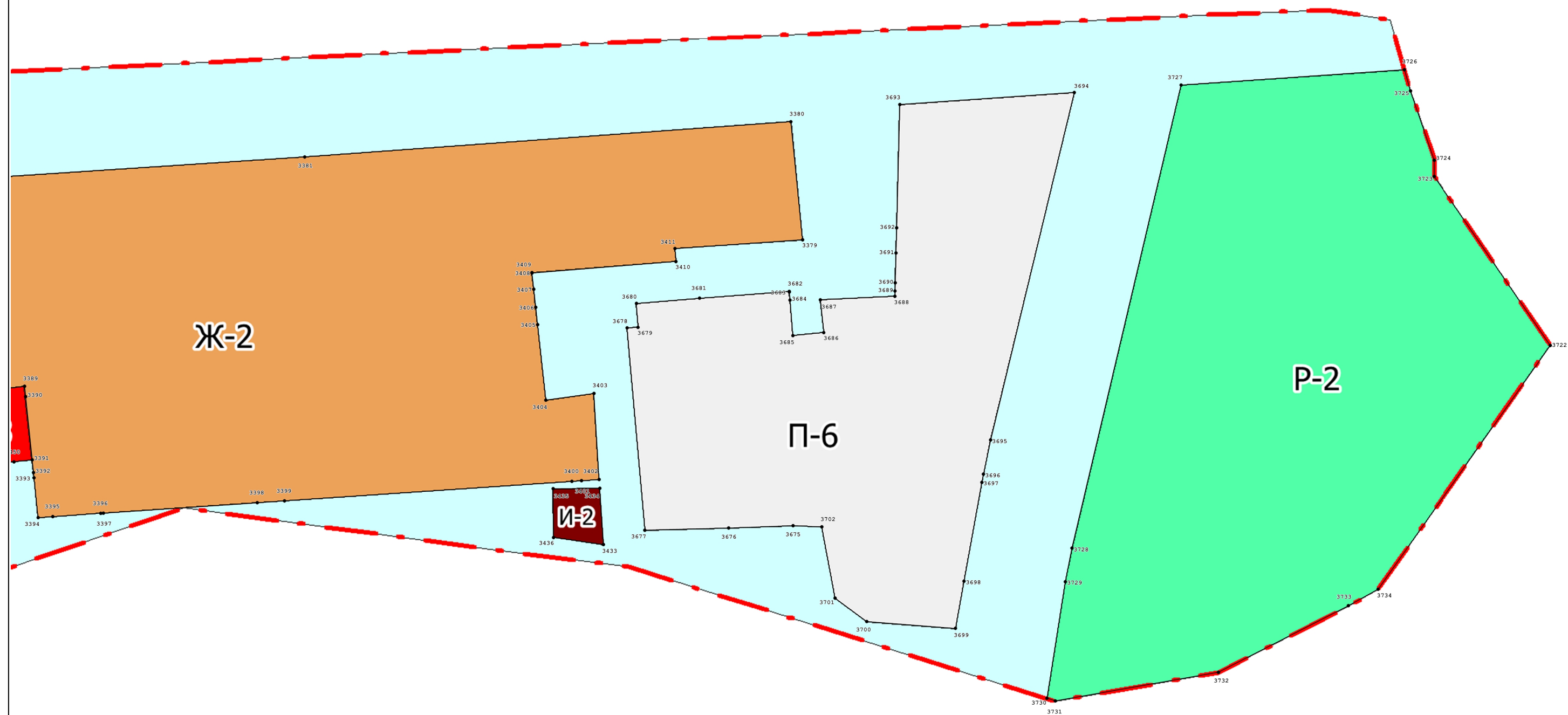


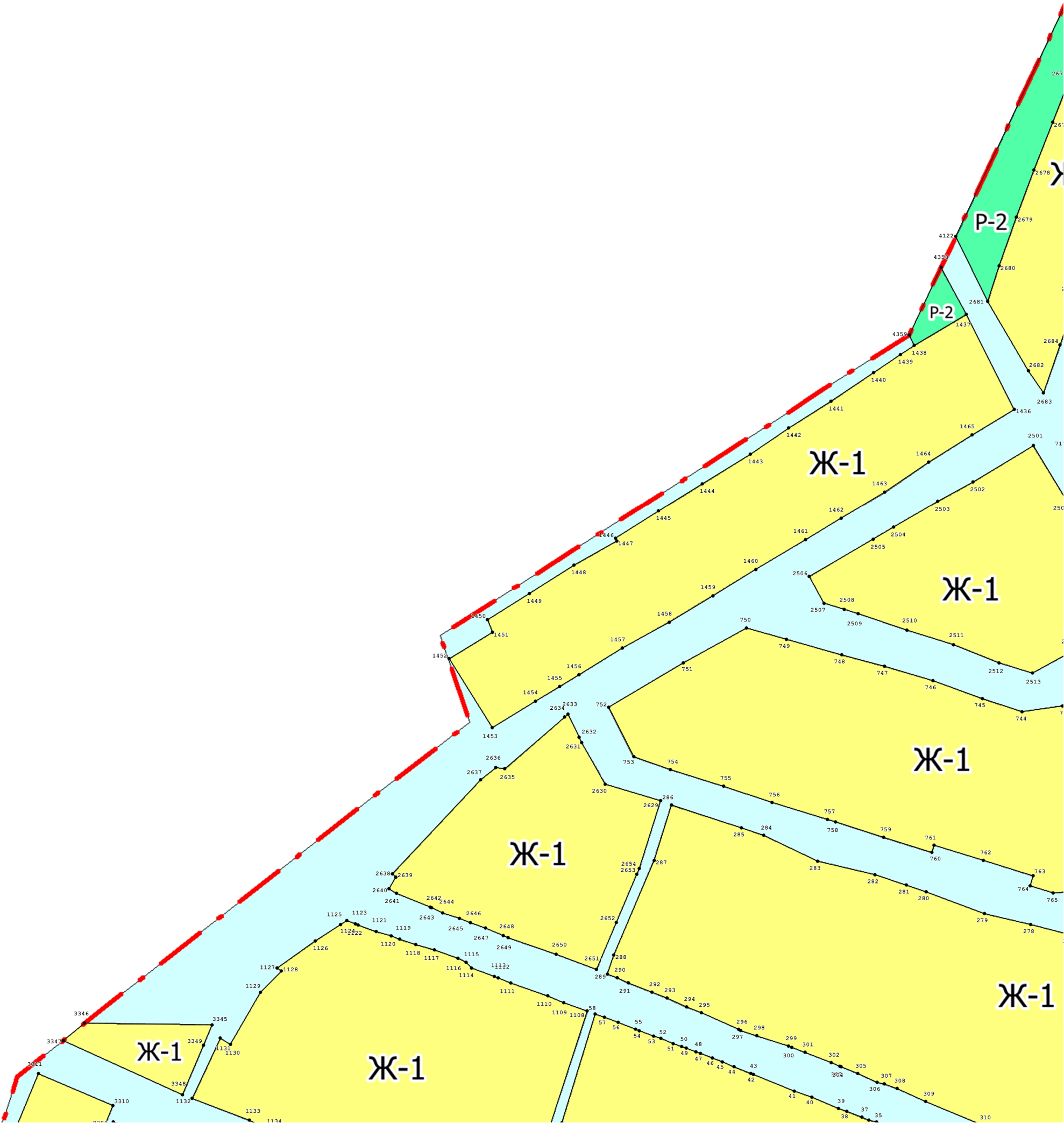
Выносной лист №1

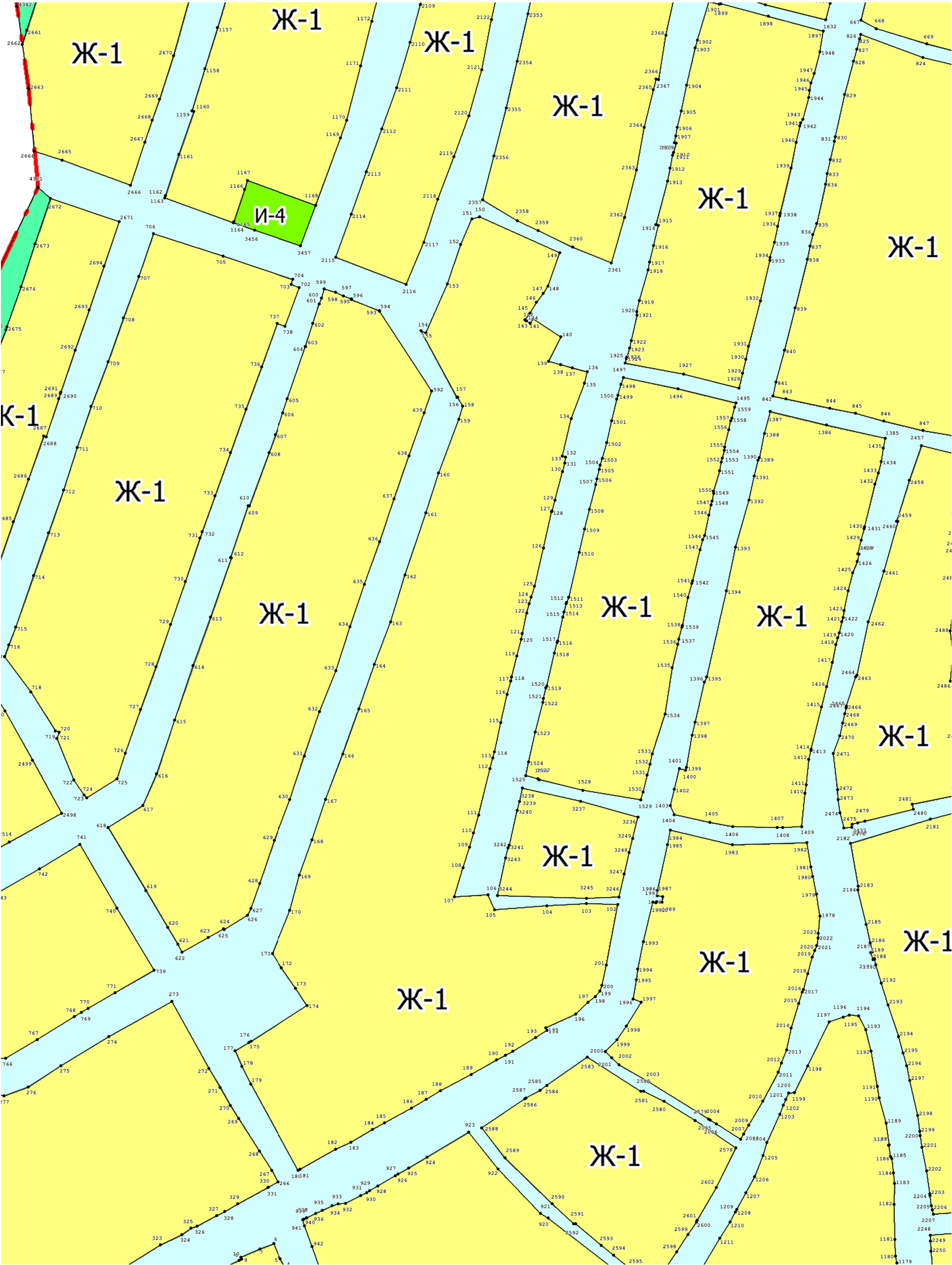


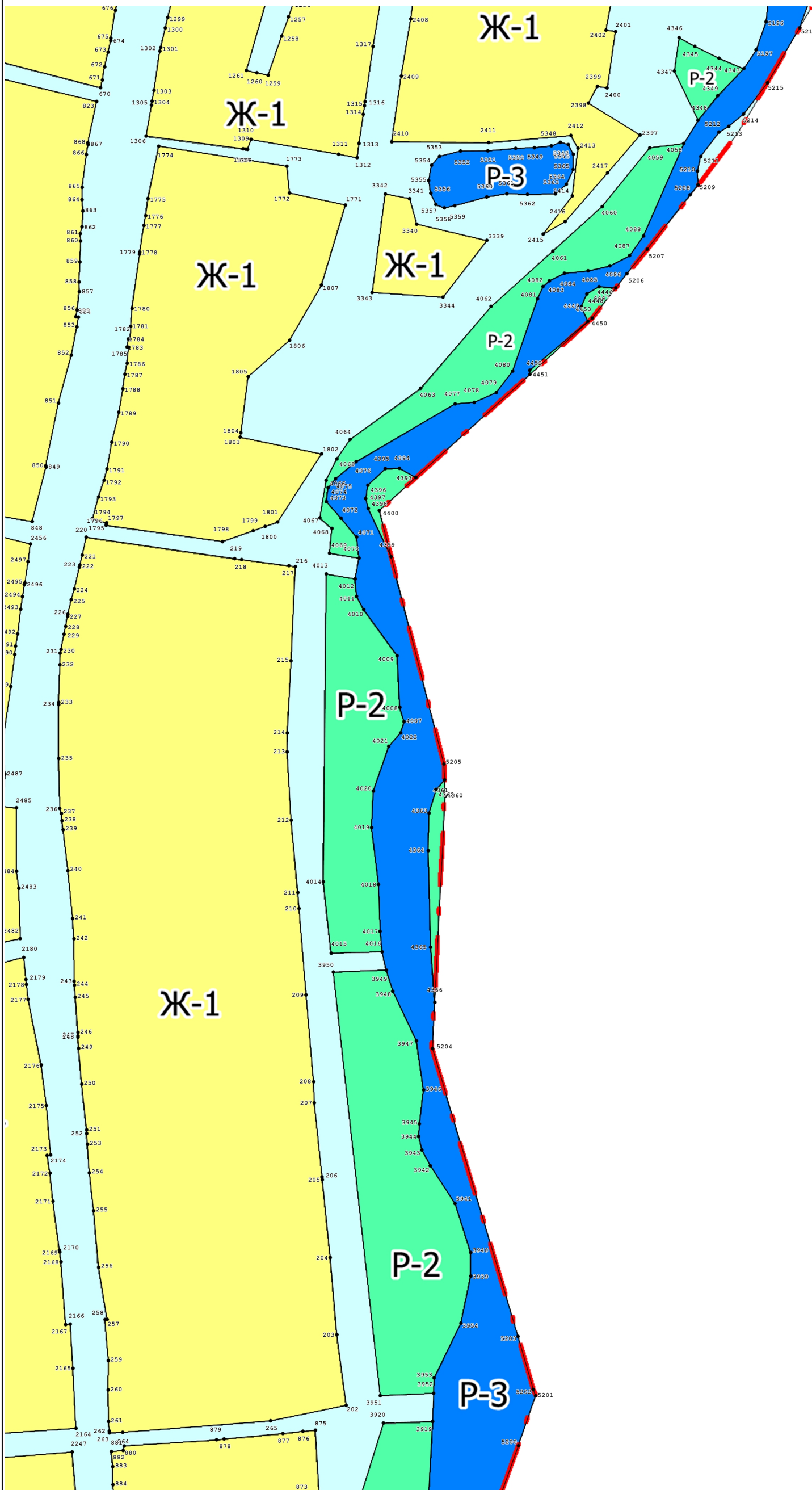
Масштаб 1:2 000





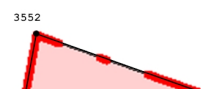


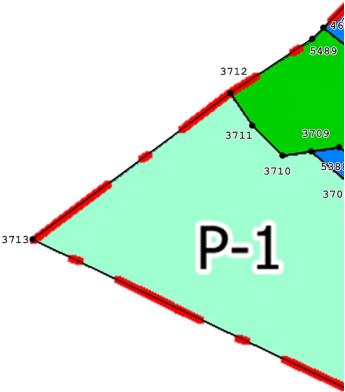
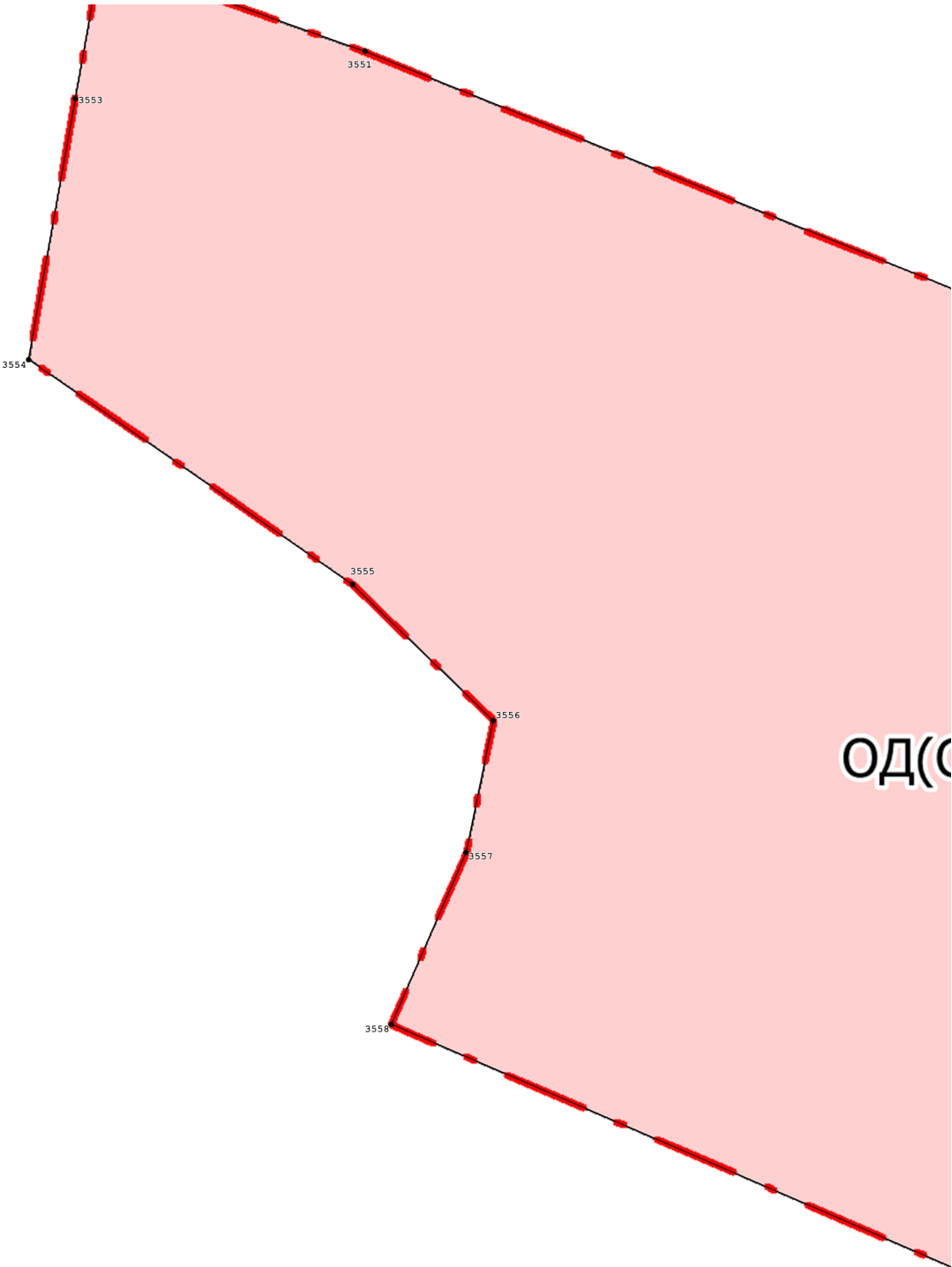




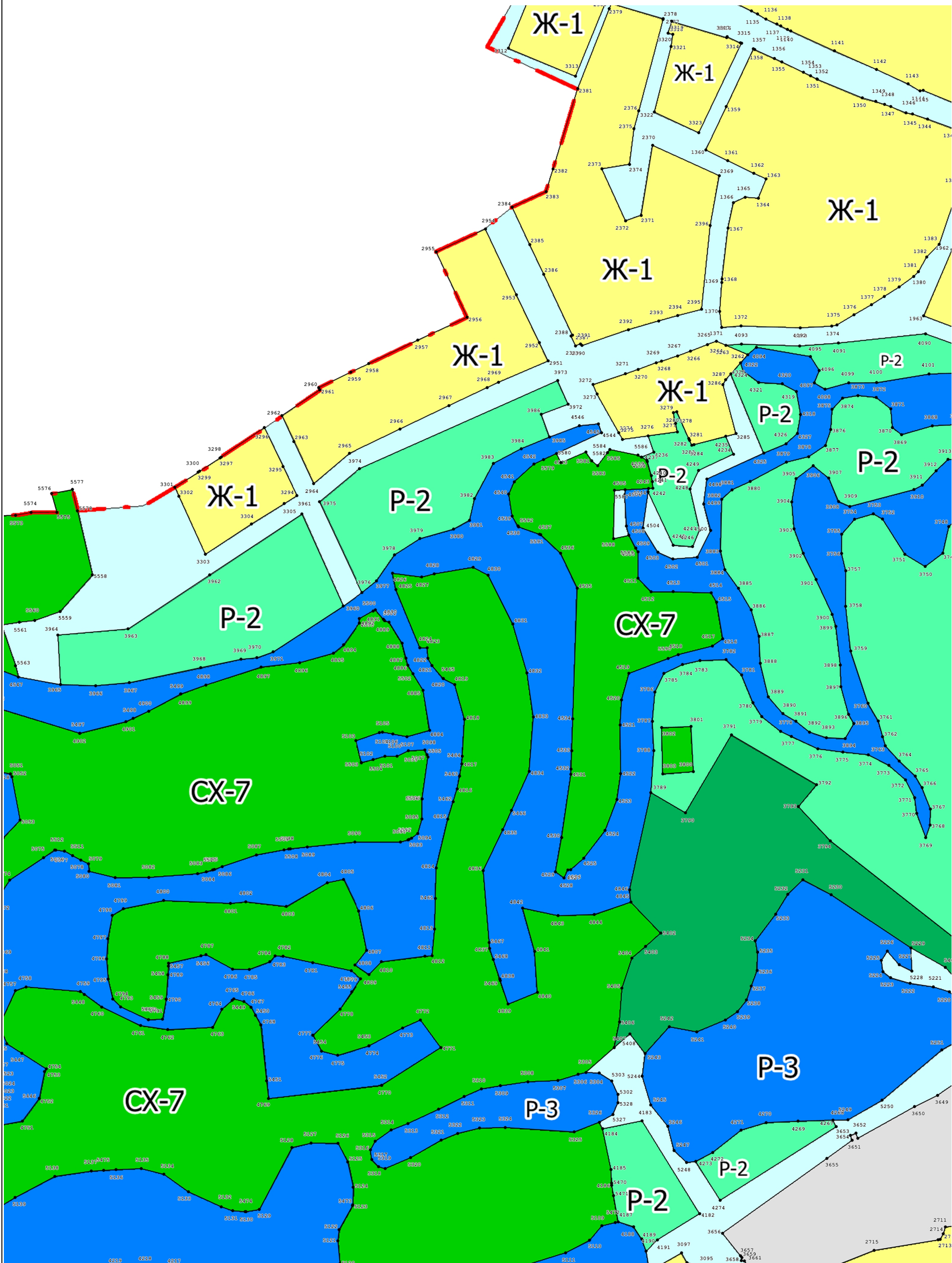


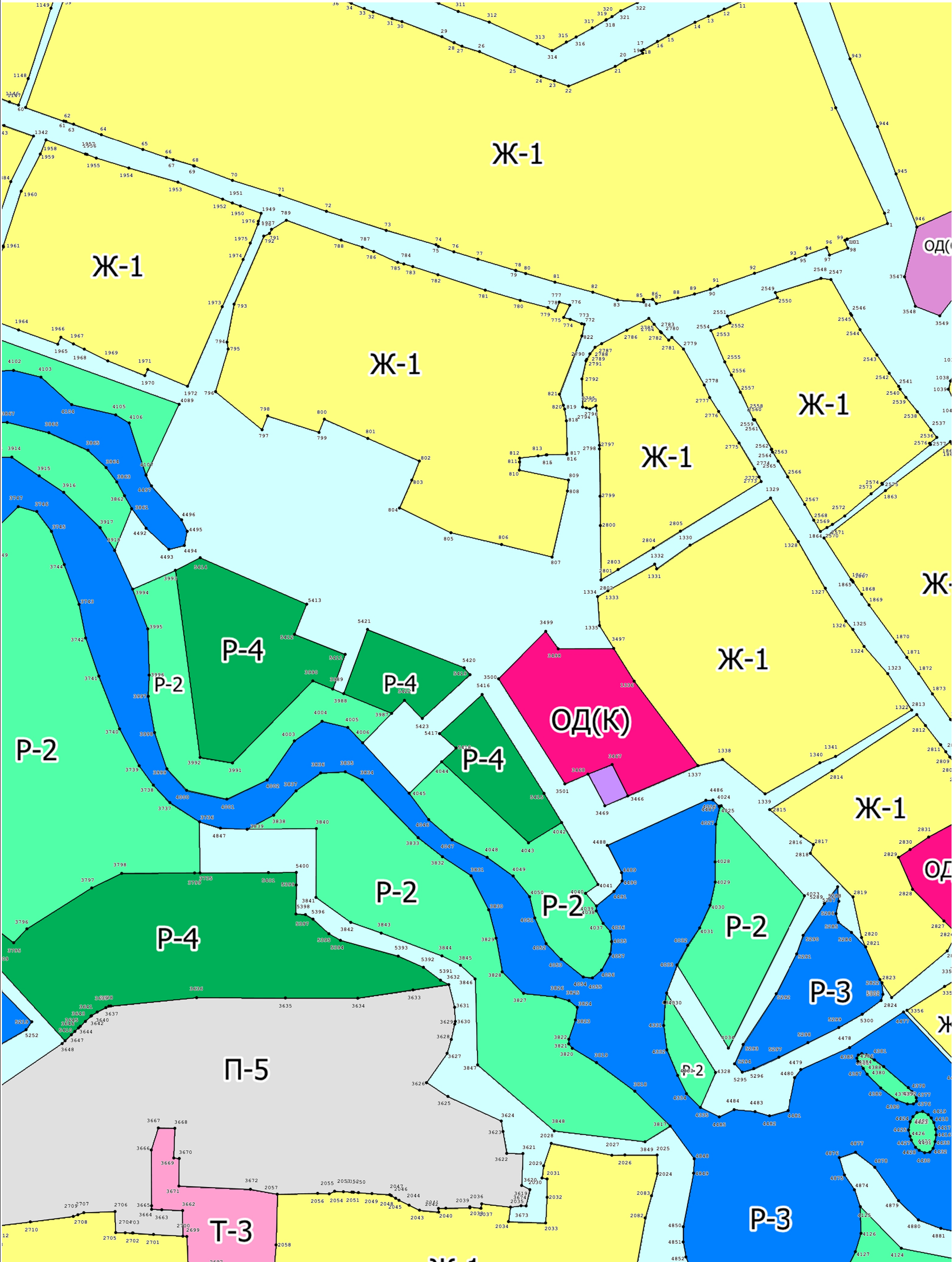
Масштаб 1:2 000

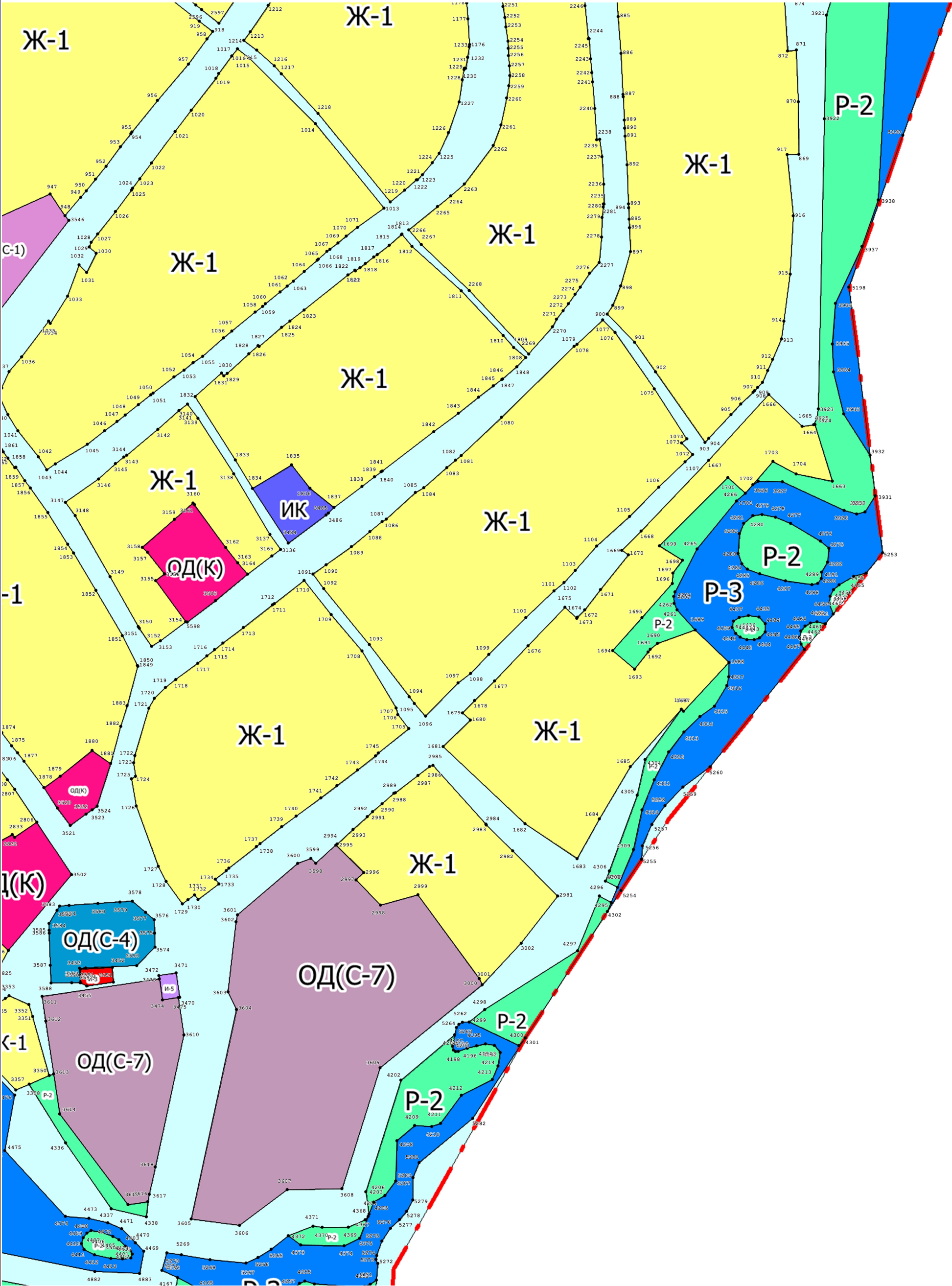


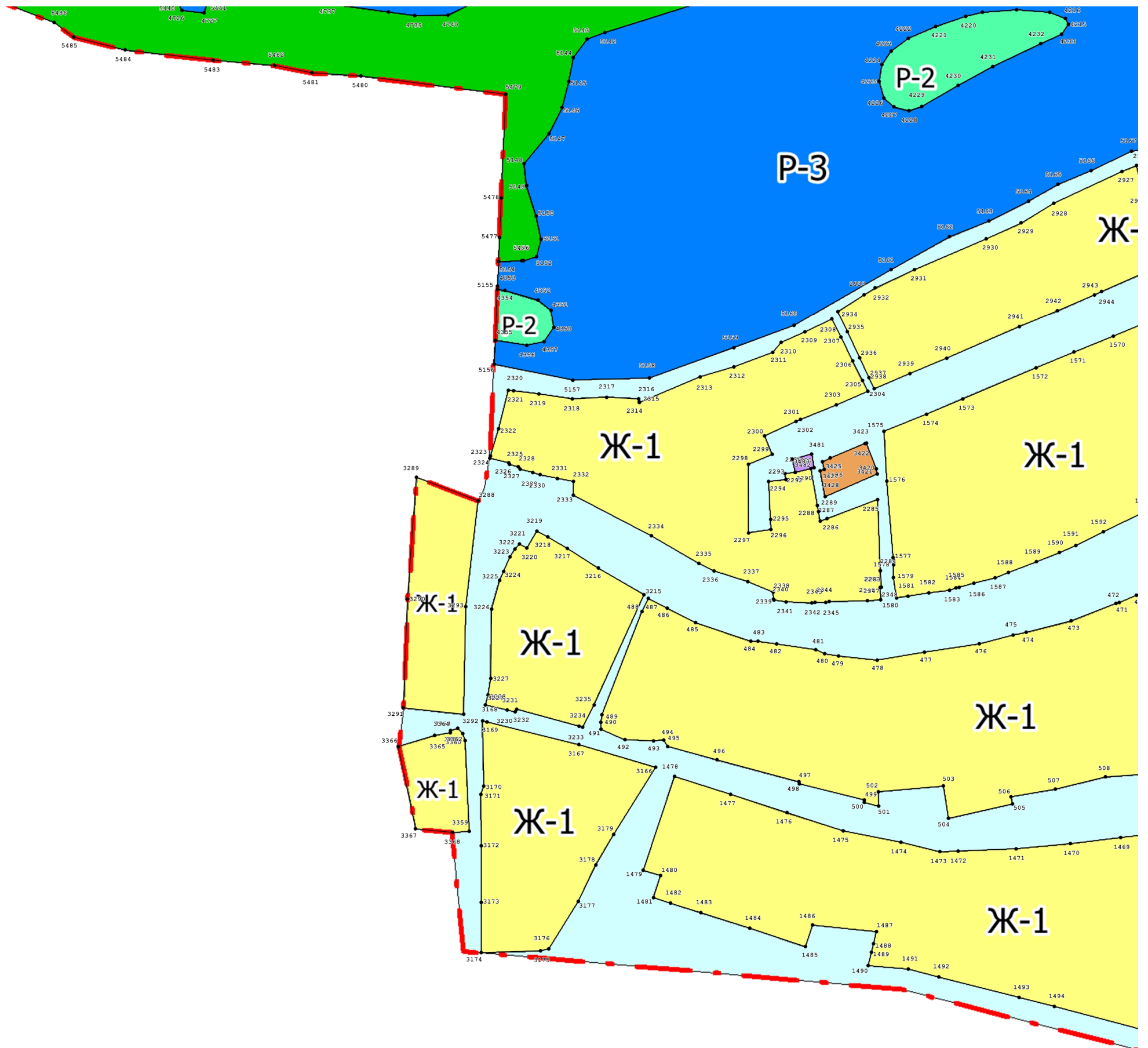








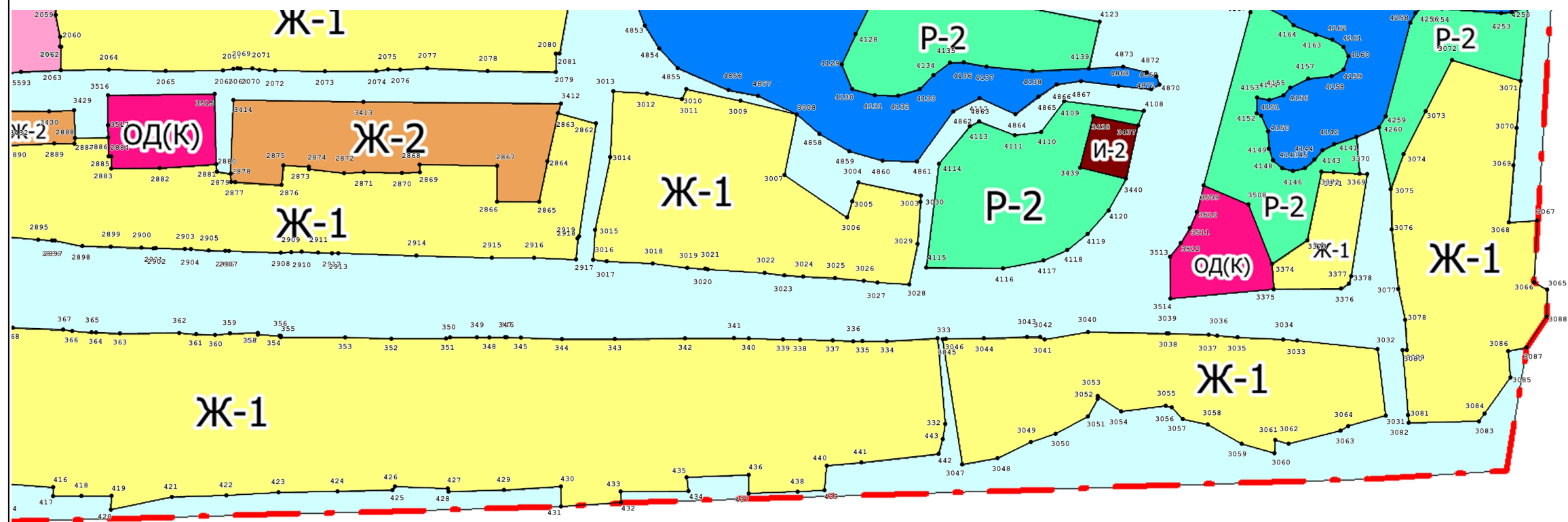




The map shows a complex land plot with several distinct colored regions. The largest areas are yellow, labeled 'Ж-1'. A green area is labeled 'P-2', and a blue area is labeled 'Ж-2'. There are also smaller red and purple areas. The plot is bounded by a red dashed line on the right and bottom. Numerous numerical labels are scattered throughout the plot, indicating specific points or measurements. The map is a detailed cadastral plan, likely for land management or legal purposes.

Масштаб 1:2 000

Выносной лист №15



Масштаб 1:2 000